

What will 'Our House–His Throne' capital campaign accomplish?

Through our commitment to Equip, Support, Serve, Witness Where God Calls Us, St. Paul Lutheran Church and School is launching our Capital Campaign:

Our House–His Throne.

As our congregation approaches 150 years, we stand with those generations who faithfully and intentionally participated in God's glorious plan and have benefitted from His abundant gifts. Continuing our journey at St. Paul requires us to address significant maintenance items while providing enhancements for outreach.

A successful campaign will fund building repairs to ensure our facilities are safe, allow us to make renovations so we can operate more effectively and improvements to upgrade our building functionality, plus provide support to other ministries and missions beyond our walls.

Trusting in God's gracious provision we hope to ensure St. Paul can serve the community and members well and be a beacon of Christ's love for generations to come.

"...to Him be glory in the church by Christ Jesus to all generations, forever and ever. Amen."

- Ephesian 3:21



FAQ's

What is the Capital Campaign for?

The Capital Campaign is to raise funds for projects that cannot be covered with our annual operating budget. By undertaking these capital improvements now, we hope to build on our strong past for the future growth of God's kingdom.

What is the timing for the campaign?

The campaign will begin in May 2022 and run for three years.

How much will these improvements cost?


Our goal is to raise **\$600,000** to fund the critical projects identified. If more or less is raised, then the projects will be handled in priority, based on available funds.

What about the General Fund? Can that be used toward this?

Our annual budget already allocates the General Fund for specific operating expenses throughout the church and school, such as staff salaries and utility bills. The Capital Campaign would fund long-term building improvements and other necessary projects that are over and above our regular expenses.

How do I give? Is there an online giving option for the project?

Special campaign envelopes will be provided and gifts can be in the form of cash/check, stocks, credit card. Online / Electronic transfer will also be available.

 For more FAQs please visit www.stpaulroyaloak.org/campaign

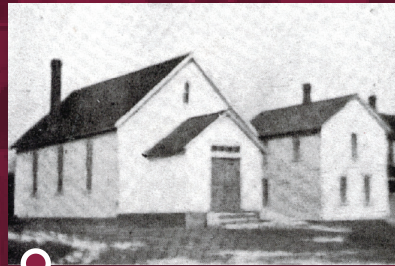
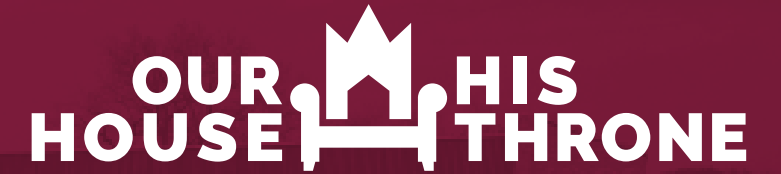


2 Samuel 7:13

He shall build a house for my name, and I will establish the throne of his kingdom forever.

Our House—His Throne

Every gift helps to achieve our goal. We ask you to prayerfully consider giving sacrificially to the three-year campaign.

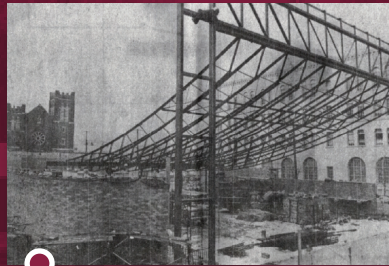


1873

Congregation established

1950

Cornerstone set on new school building



1972

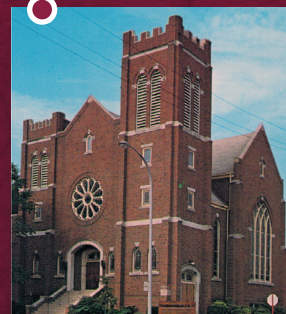
New church building completion

1916

Present Day School established

1939

Capital Campaign Kick-off (paid off entire church debt by 1942)



2019

LCMS School National Accreditation



Scriptural Basis

“So Christ himself gave the apostles, the prophets, the evangelists, the pastors and teachers, to equip his people for works of service, so that the body of Christ may be built up.”

- Ephesians 4:11-12

“But since you excel in everything—in faith, in speech, in knowledge, in complete earnestness and in the love we have kindled in you see that you also excel in this grace of giving.”

- Corinthians 8:7

“And let it be given into the hand of the workmen who have the oversight of the house of the Lord, and let them give it to the workmen who are at the house of the Lord, repairing the house”

- 2 Kings 22: 5

Monthly Gift	Annual Gift	3-yr Campaign Total
\$2,000 →	\$24,000 →	\$72,000
\$1,500 →	\$18,000 →	\$54,000
\$1,250 →	\$15,000 →	\$45,000
\$1,000 →	\$12,000 →	\$36,000
\$800 →	\$9,600 →	\$28,800
\$600 →	\$7,200 →	\$21,600
\$400 →	\$4,800 →	\$14,400
\$200 →	\$2,400 →	\$7,200
\$100 →	\$1,200 →	\$3,600
\$50 →	\$600 →	\$1,800

I was glad when they said unto me, “Let us go unto the house of the Lord.” Psalm 122:1